



# Shape Shifters: Collage from the Collection

## Year K - 6 Worksheet

Student Name: \_\_\_\_\_

**WOLLONGONG  
ART GALLERY**

Corner Kembla & Burelli streets Wollongong  
Locked Bag 8821 Wollongong DC NSW 2500  
**phone** 02 4227 8500  
**email** [galleries@wollongong.nsw.gov.au](mailto:galleries@wollongong.nsw.gov.au)  
**web** [wollongongartgallery.au](http://wollongongartgallery.au)  
Wollongong Art Gallery is a service of Wollongong City Council  
ABN 32 054 892 885

  
**wollongong**  
city of innovation



**Danie Mellor**

born Mackay, Queensland  
1971, lives and works Southern  
Highlands, New South Wales

***Marri diramu: balam  
dugurrba***

**2016**

mixed media on Saunders  
Waterford paper with wash,  
glitter and Swarovski crystal,  
147 x 97cm

**Question 1**

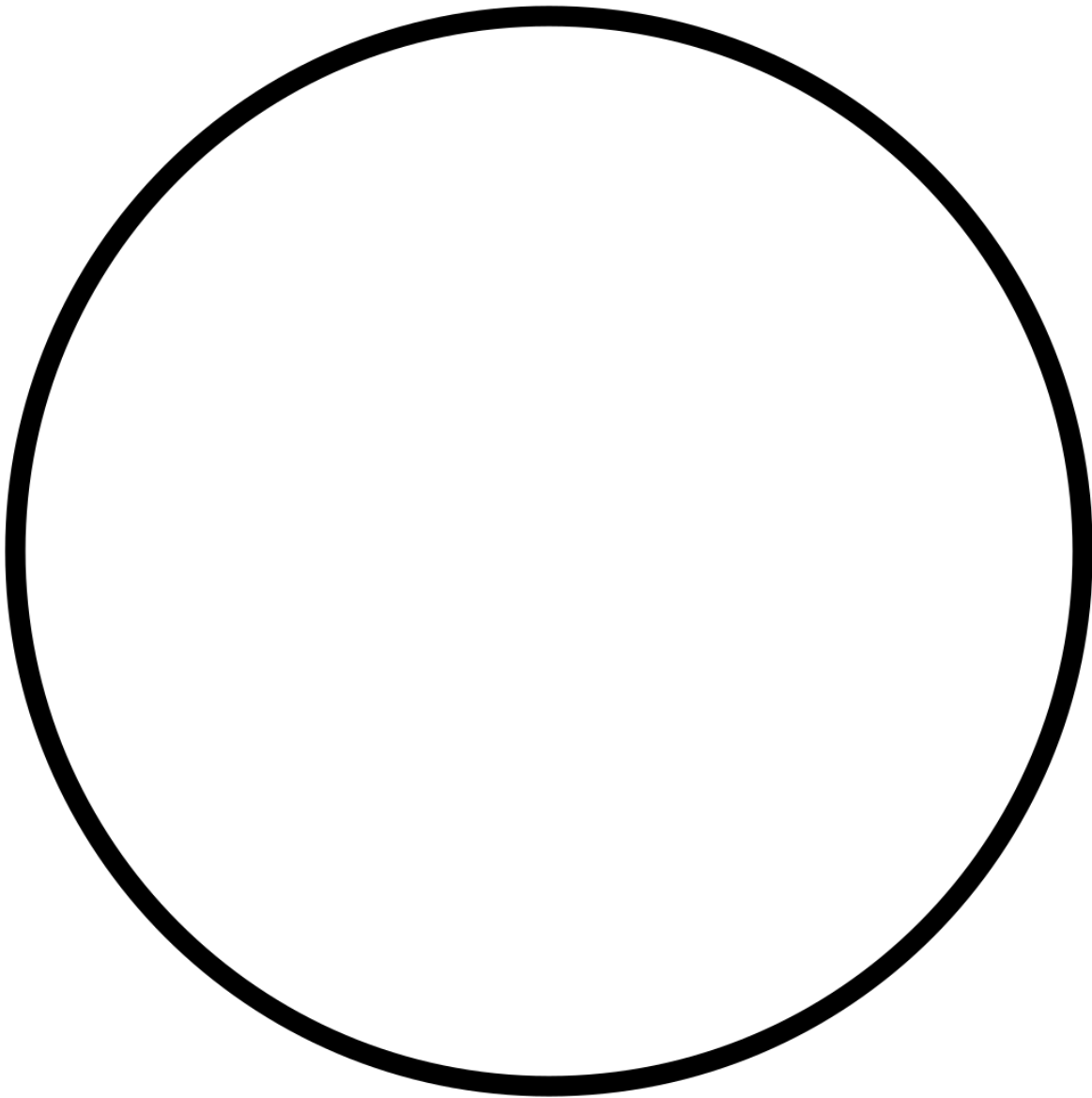
Danie Mellor has referred to  
the Willow Pattern in this  
artwork. The Willow pattern is  
a design used to decorate

crochery, most often seen in blue and white, that features common elements. These elements are a willow tree, an orange or apple tree, two birds, people on a bridge, a fence, a boat and a tea house, which looks like a pagoda.

The scene painted in this artwork referencing a painting done by Conrad Martens which depicts Illawarra forest scenes, including fig trees.

**Activity:** In the space on the next page, design a willow pattern inspired plate, featuring a scene located within the Illawarra. In your plate design must include First Nations flora and fauna.

Cover: (detail) Vicki Varvaressos, *The best face value for autumn*, 1978, synthetic polymer paint, collage of cut magazine illustrations on canvas, 155 x 155cm.



**Question 2**

How many birds can you see in this artwork? Can you name the each species?

---

---

---

---



**Robert Klippel**

born Sydney, New South  
Wales 1920 - 2001

**(untitled)**

**1986**

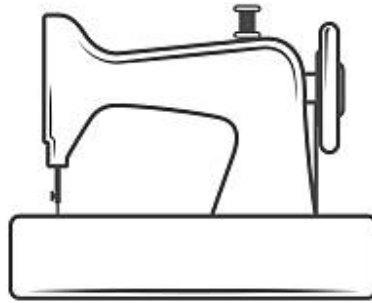
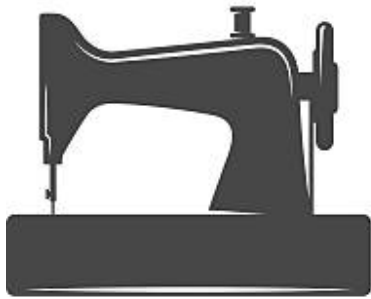
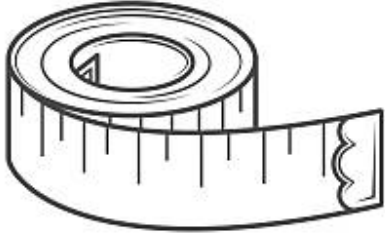
collage of cut  
photocopies, ball-point  
pen on paper, 24.8 x  
26.7cm

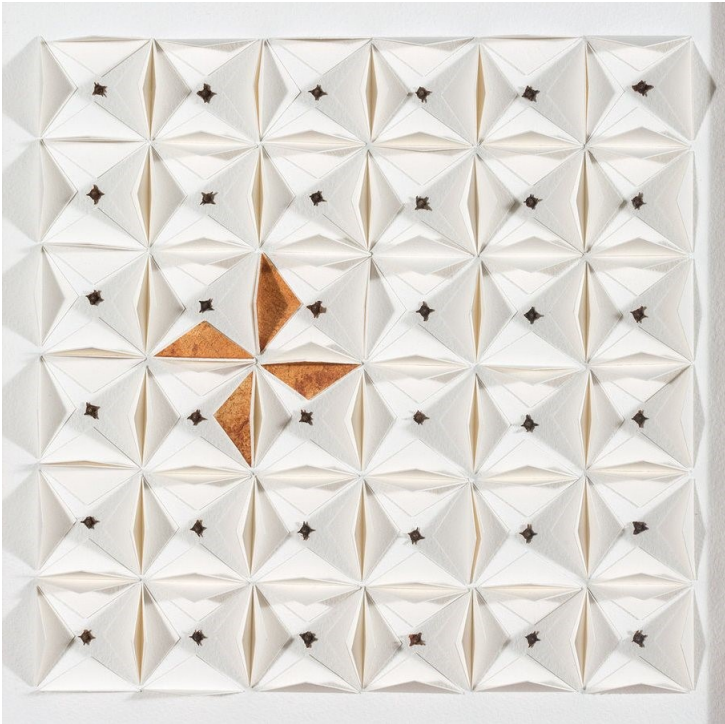
**Question 1**

Robert Klippel has created this collage from photocopied images.

**Activity:** Create a collage using the images of sewing machines and tools featured on the following page.

Be creative in how you compose your collage in the space provided on the following page. Collect and return scissors and glue from your tour guide / teacher.





**Lee Bethel**

born Sydney, New South Wales  
1956

***Calyx***

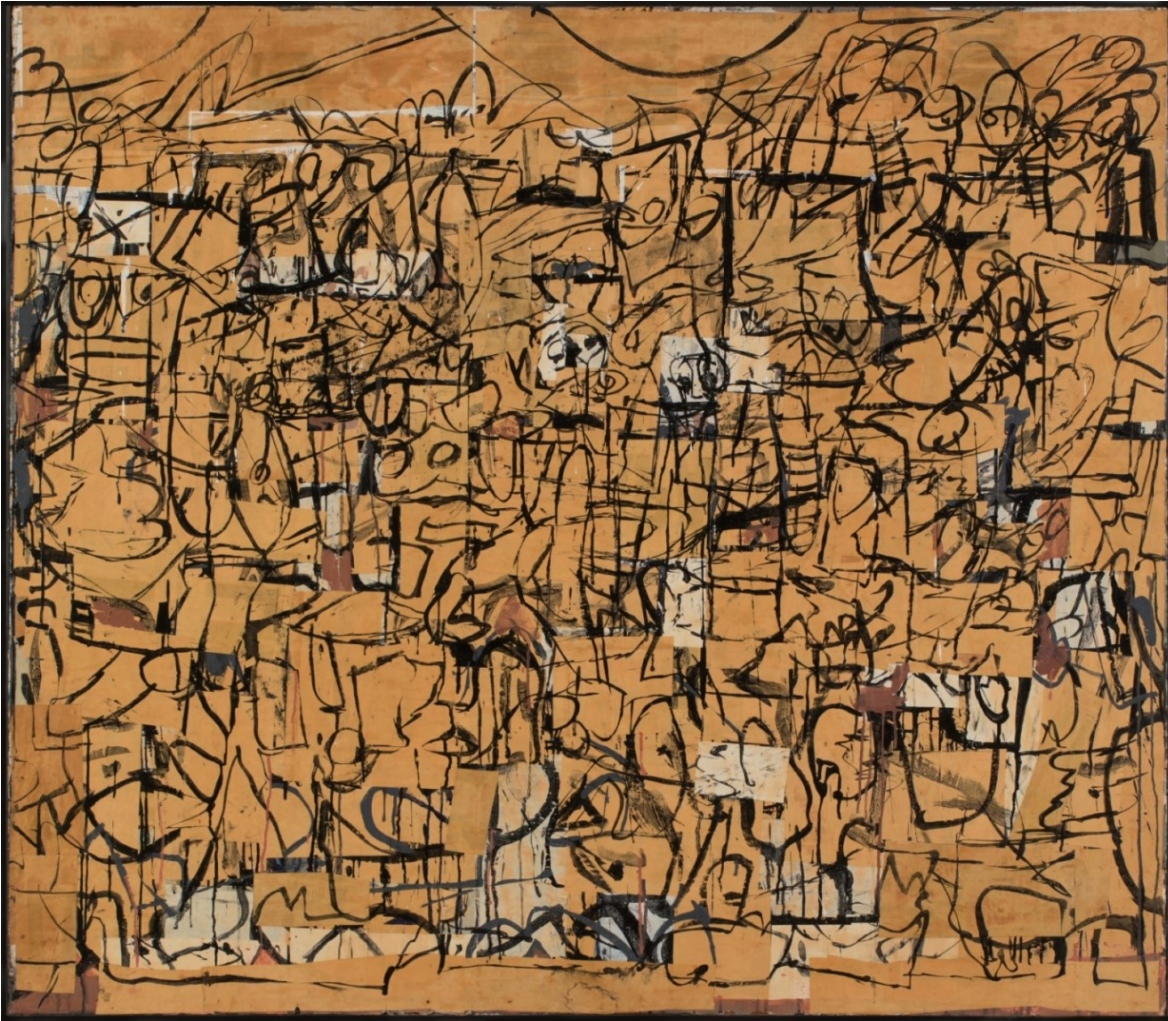
**2017**

seeds on handcut and folded  
paper on board, 30 x 30cm

**Question 1**

The artist has folded paper to resemble a Calyx, which is the name for the outer whorl of a flower. Seeds, foraged from the artists garden in Bundeena are also featured in this artwork. Can you see them?

**Activity:** In the space below draw a flower using only geometric shapes.



**Suzanne Archer**

born Great Britain 1945, arrived Australia 1965

***Private grounds***

**1987**

collage, ink and PVA glue on board, 137.0 x 157.0 cm

**Question 1**

Describe the types of lines in this artwork

---

---

---

## Question 2

What does this artwork remind you of?

---

---

---

---

---

---

---

## Question 3

**Activity:** Teacher / Tour Guide will distribute pieces of paper cut into a rectangle shape and a black permanent marker to each student. Students will be invited to draw marks on their piece of paper and combine these drawings together to form a large collaborative artwork.





## **Tony Convey**

born Prahan, Victoria 1946

### ***Magnetic animals***

**1998**

oil on tin on painted wood, 74 x 121 x 8cm

In his teens, Tony Convey escaped from boarding school and was pursued by two teachers until the path ended and he was standing on the edge of a cliff. In that moment a fox appeared beside him and gazed up. Convey says that the warm energy in the animal's eyes saved him. In *Magnetic animals*, Convey has painted himself and his totemic fox as twins united by a rainbow stream of bubbles.

### **Question 1:**

The haiku is a Japanese poetic form that consists of three lines, with five syllables in the first line, seven in the second, and five in the third.

Write a haiku poem about *Magnetic animals*.

First line (five syllables)

---

Second line (seven syllables)

---

Third line (five syllables)

---



## **Jenny Orchard**

born Ankara, Turkey 1951,  
arrived Australia 1975

### ***Blue floating conscious mind, into the galaxies, into the trees***

**2020**

watercolour, collage and  
gouache on paper, 76 x 56cm

Jenny Orchard's quirky  
aquarium in *Blue floating  
conscious mind, into the  
galaxies, into the trees*, is

swimming with whimsical lifeforms; eccentric plankton, uprooted trees and talking orchids. Conveying quiet empathic purpose, Orchard combines exquisite cut-outs and pigments to create an imaginary world where all creatures are equal. Orchard's collage belies her interest in the Greek philosopher Parmenides who held that existence is a unified whole, despite changing forms and motion over time.

### **Question 1:**

Using lead pencil, create a sea creature incorporating the image of the eye on the next page into your design. If you have enough time, add colour to your sea creature using coloured pencils or markers.

